



RENTAL LINE RS 20 – 225 kVA

REAL POWER FOR YOUR RENTAL FLEET

THE NEW ENDRESS RENTAL LINE RS



Prepared for access to aggregate via Smartphone, PC & Tablet



Retrofitting of large start batteries possible

Problem-free use also in winter due to standard engine and coolant prewarming

Engine according to emissions level Stage 3A

Manual/ automatic Instrument panel / IP 54

Individually fused sockets

Skid frame with a continuous fork-lift plates and ram protection



Central crane loading lug

Galvanised canopy for increased corrosion protection

Large steel tank for running times of 24 - 50 hours (dependent on the model)

Outlet for the external fuelling

Liquid collecting tray to protect the environment



Accessible from all sides



Edge protection standard

RENTAL FEATURES

Main battery switch



Three-way fuel valve



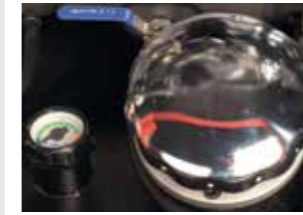
Manual oil scavenger pump



Remote start connection



Second tank indicator on the fitting



Diesel filter with water separator



Soundproofed canopy - extra quiet - only LWA 89 db (A)

Up to LWA 89 db (A)*



Flexibility as standard



Mobility Kit for improved flexibility



*Dependent on the model

TECHNICAL SPECIFICATIONS



3A



3A

3A



ESE 180 JW/RS

3A

3A



Trailer available as an option

3A

3A

RENTAL Line RS 20 - 50 kVA

Model	ESE 20 YW/RS ⁽⁴⁾	ESE 30 YW/RS	ESE 35 YW/RS ⁽⁴⁾	ESE 45 YW/RS	ESE 50 YW/RS ⁽⁴⁾
Order No.	333 271	333 272	333 273	333 274	333 275
Max. output [LTP] kVA/kW 3~	19,6 / 15,7	32,5 / 26,0	32,5 / 26,0	46,0 / 36,8	46,0 / 36,8
Continuous output [PRP] kVA/kW 3~	17,9 / 14,3	30,5 / 24,4	30,5 / 24,4	42,0 / 33,6	42,0 / 33,6
Brand	MeccAlte	MeccAlte	MeccAlte	MeccAlte	MeccAlte
Alternator model	Synchronous	Synchronous	Synchronous	Synchronous	Synchronous
Insulation class	Class H	Class H	Class H	Class H	Class H
Nominal voltage	400 V 3- / 230 V 1-	400 V 3- / 230 V 1-	400 V 3- / 230 V 1-	400 V 3- / 230 V 1-	400 V 3- / 230 V 1-
Rated current / Power factor cos φ	25,8 A 3- / 0,8	44,0 A 3- / 0,8	44,0 A 3- / 0,8	60,6 A 3- / 0,8	60,6 A 3- / 0,8
Frequency / Voltage regulation	50 Hz / Electronic	50 Hz / Electronic	50 Hz / Electronic	50 Hz / Electronic	50 Hz / Electronic
Engine	YANMAR 4TNV88	YANMAR 4TNV98	YANMAR 4TNV98	YANMAR 4TNV98T	YANMAR 4TNV98T
Cylinder and arrangement	4-Cylinder 4-phase	4-Cylinder 4-phase	4-Cylinder 4-phase	4-Cylinder 4-phase	4-Cylinder 4-phase
Cooling system	Water cooled	Water cooled	Water cooled	Water cooled	Water cooled
Displacement	2190 cm ³	3319 cm ³	3319 cm ³	3319 cm ³	3319 cm ³
Engine output [PRP]	16,4 kW	30,7 kW	30,7 kW	37,9 kW	37,9 kW
Engine speed (RPM) / Speed regulation	1500 / Mechanical	1500 / Mechanical	1500 / Electronic	1500 / Mechanical	1500 / Electronic
Fuel / Tank capacity (Liter)	Diesel / 200	Diesel / 200	Diesel / 200	Diesel / 200	Diesel / 200
Consumption / Running time at a 75% load ⁽⁶⁾	3,8 l / 52 h	5,8 l / 34 h	5,8 l / 34 h	8,2 l / 24 h	8,3 l / 24 h
Starting system / On-board voltage	E-Start / 12 V	E-Start / 12 V	E-Start / 12 V	E-Start / 12 V	E-Start / 12 V
Sound power level LWA	92 dB(A)	93 dB(A)	93 dB(A)	91 dB(A)	89 dB(A)
Sound pressure level (7 m)	67 dB(A)	68 dB(A)	68 dB(A)	66 dB(A)	64 dB(A)
Weight (kg)	949	1054	1074	1129	1146
Dimensions L x W x H (mm)	2300 x 950 x 1500	2300 x 950 x 1500	2300 x 950 x 1500	2300 x 950 x 1500	2300 x 950 x 1500
Available accessories	Order No.	Order No.	Order No.	Order No.	Order No.
Trailer with a rigid drawbar ⁽¹⁾	341 127 / FG 20-50 ST	341 127 / FG 20-50 ST	341 127 / FG 20-50 ST	341 127 / FG 20-50 ST	341 127 / FG 20-50 ST
Trailer with a height adjustable drawbar ⁽¹⁾	341 125 / FG 20-50 HV	341 125 / FG 20-50 HV	341 125 / FG 20-50 HV	341 125 / FG 20-50 HV	341 125 / FG 20-50 HV
Float switch	342 033	342 033	342 033	342 033	342 033
Changeover contactors	343 000R / E-US 32	343 002R / E-US 60	343 002R / E-US 60	343 003R / E-US 90	343 003R / E-US 90
E-RMA SIM	342 220	342 220	342 220	342 220	342 220
E-RMA LAN	342 221	342 221	342 221	342 221	342 221
Maintenance kit 500 hours ⁽²⁾	164 023	164 024	164 026	164 025	164 027
Special equipment ⁽³⁾	Order No.	Order No.	Order No.	Order No.	Order No.
FI circuit breaker - sensitive to universal current	342 012	342 013	342 013	342 013	342 013
IT/TN switchover to supplying power to a building / field operation	342 232	-	342 232	-	342 232
Insulation monitoring	163 076	163 076	163 076	163 076	163 076
Potential-free contact	342 030	342 030	342 030	342 030	342 030
External battery charging	342 031	342 031	342 031	342 031	342 031
Twilight switch	342 032	342 032	342 032	342 032	342 032
Particulate filter	342 400	-	342 400	-	342 400
ENDRESS Hybrid System EHS 4/11-R	342 231	342 231	342 231	342 231	342 231
Remote control panel ⁽⁶⁾	E135 961	E135 961	E135 961	E135 961	E135 961
Removable doors	342 600	342 600	342 600	342 600	342 600

- (1) Require the removal of the skid frame
- (2) Maintenance kit consisting of oil filter, fuel filter, air filter
- (3) Cannot be retrofitted
- (4) All power generators marked with this symbol fulfill the Emission stage 3A
- (5) These data are based on average values since individual cases can vary, and are therefore not binding.
- (6) Control and monitoring unit including a second control panel, 2 communication modules and 10m data cable

RENTAL Line RS 67 - 225 kVA

Model	ESE 67 JW/RS ⁽⁴⁾	ESE 95 JW/RS ⁽⁴⁾	ESE 115 JW/RS ⁽⁴⁾	ESE 145 JW/RS ⁽⁴⁾	ESE 180 JW/RS ⁽⁴⁾	ESE 225 JW/RS ⁽⁴⁾
Order No.	333 276	333 277	333 278	333 279	333 280	333 288
Max. output [LTP] kVA/kW 3~	66 / 52,8	94 / 75,2	116 / 92,8	140 / 112	176 / 140,8	220 / 176
Continuous output [PRP] kVA/kW 3~	60 / 48	85 / 68	105 / 84	128 / 102,4	160 / 128	200 / 160
Brand	MeccAlte	MeccAlte	MeccAlte	MeccAlte	MeccAlte	MeccAlte
Alternator model	Synchronous	Synchronous	Synchronous	Synchronous	Synchronous	Synchronous
Insulation class	Class H	Class H	Class H	Class H	Class H	Class H
Nominal voltage	400 V 3- / 230 V 1-	400 V 3- / 230 V 1-	400 V 3- / 230 V 1-	400 V 3- / 230 V 1-	400 V 3- / 230 V 1-	400 V 3- / 230 V 1-
Rated current / Power factor cos φ	86,6 A 3- / 0,8	122,7 A 3- / 0,8	151,6 A 3- / 0,8	184,8 A 3- / 0,8	230,9 A 3- / 0,8	288,7 A 3- / 0,8
Frequency / Voltage regulation	50 Hz / Electronic	50 Hz / Electronic	50 Hz / Electronic	50 Hz / Electronic	50 Hz / Electronic	50 Hz / Electronic
Engine	JohnDeere 4045HFG81	JohnDeere 4045HFG82	JohnDeere 4045HFG82	JohnDeere 4045HFG82	JohnDeere 6068HFG82	JohnDeere 6068HFG82
Cylinder and arrangement	4-Cylinder 4-phase	4-Cylinder 4-phase	4-Cylinder 4-phase	4-Cylinder 4-phase	6-Cylinder 4-phase	6-Cylinder 4-phase
Cooling system	Water cooled	Water cooled	Water cooled	Water cooled	Water cooled	Water cooled
Displacement	4500 cm ³	4500 cm ³	4500 cm ³	4500 cm ³	6800 cm ³	6800 cm ³
Engine output [PRP]	56 kW	76 kW	94 kW	112 kW	139 kW	184 kW
Engine speed (RPM) / Speed regulation	1500 / Mechanical	1500 / Electronic	1500 / Electronic	1500 / Electronic	1500 / Electronic	1500 / Electronic
Fuel / Tank capacity (Liter)	Diesel / 400	Diesel / 400	Diesel / 650	Diesel / 650	Diesel / 960	Diesel / 960
Consumption / Running time at a 75% load ⁽⁶⁾	11,9 l / 33,6	16,1 l / 24,8	19,6 l / 33,2	23,4 l / 27,8	27,8 l / 34,5	37,6 l / 25,5
Starting system / On-board voltage	E-Start / 12 V	E-Start / 12 V	E-Start / 12 V	E-Start / 12 V	E-Start / 12 V	E-Start / 12 V
Sound power level LWA	91 dB(A)	94 dB(A)	93 dB(A)	93 dB(A)	96 dB(A)	96 dB(A)
Sound pressure level (7 m)	66 dB(A)	69 dB(A)	68 dB(A)	68 dB(A)	71 dB(A)	71 dB(A)
Weight (kg)	1796	1876	2128	2188	2588	2664
Dimensions L x W x H (mm)	2900 x 1090 x 1925	2900 x 1090 x 1925	3370 x 1090 x 1995	3370 x 1090 x 1995	3560 x 1190 x 2180	3560 x 1190 x 2180
Available accessories	Order No.	Order No.	Order No.	Order No.	Order No.	Order No.
Trailer with a rigid drawbar ⁽¹⁾	341 131	341 133	341 135	341 135	⁽⁵⁾	⁽⁵⁾
Trailer with a height adjustable drawbar ⁽¹⁾	341 132	341 134	341 136	341 136	341 137	341 137
Float switch	342 033	342 033	342 033	342 033	342 033	342 033
Changeover contactors	343 004 / E-US 110	343 013 / E-US 140	343 014 / E-US 200	343 005 / E-US 250	343 005 / E-US 250	343 007 / E-US 400
E-RMA SIM	342 220	342 220	342 220	342 220	342 220	342 220
E-RMA LAN	342 221	342 221	342 221	342 221	342 221	342 221
Maintenance kit 500 hours ⁽²⁾	upon request	upon request	upon request	upon request	upon request	upon request
Special equipment ⁽³⁾	Order No.	Order No.	Order No.	Order No.	Order No.	Order No.
FI circuit breaker - sensitive to universal current	upon request	upon request	upon request	upon request	upon request	upon request
Insulation monitoring	163 076	163 076	163 076	163 076	163 076	163 076
Potential-free contact	342 030	342 030	342 030	342 030	342 030	342 030
External battery charging	342 031	342 031	342 031	342 031	342 031	342 031
Twilight switch	342 032	342 032	342 032	342 032	342 032	342 032
Particulate filter	342 401	342 402	342 402	342 403	342 403	342 403
Remote control panel ⁽⁷⁾	E135 961	E135 961	E135 961	E135 961	E135 961	E135 961
Removable doors	342 601	342 601	342 601	342 601	342 601	342 601
Powerlock connector	342 034	342 034	342 034	342 034	342 034	342 034

- (1) Require the removal of the skid frame
- (2) Maintenance kit consisting of oil filter, fuel filter, air filter
- (3) Cannot be retrofitted
- (4) All power generators marked with this symbol fulfill the Emission stage 3A
- (5) Not available
- (6) These data are based on average values since individual cases can vary, and are therefore not binding.
- (7) Control and monitoring unit including a second control panel, 2 communication modules and 10 m data cable

FEATURES OF RENTAL LINE RS

Features

- Soundproofed canopy – extra quiet – only LWA 89 db (A) (dependent on the model)
- Engine according to emissions level Stage 3A (dependent on the model)
- Manual/ automatic Instrument panel / IP 54
- Skid frame with a continuous fork-lift plates and ram protection
- Galvanised canopy for increased corrosion protection
- Large steel tank for running times of 24 - 50 hours (dependent on the model)
- Outlet for the external fuelling included three-way fuel valve
- Liquid collecting tray to protect the environment
- Problem-free use also in winter due to standard engine and coolant prewarming
- Prepared for access to aggregate via Smartphone, PC & Tablet
- Main battery switch
- Manual oil scavenger pump
- Remote start connection
- Diesel filter with water separator

Accessories

- Trailer with a rigid drawbar
- Trailer with a height adjustable drawbar
- Changeover contactors
- Float switch
- E-RMA SIM
- E-RMA LAN
- Maintenance kit consisting of oil filter, fuel filter, air filter

Special equipment ⁽¹⁾

- FI circuit breaker - sensitive to universal current
- IT/TN switchover to supplying power to a building / field operation
- Insulation monitoring
- Potential-free contact
- External battery charging
- Twilight switch
- Particulate filter
- ENDRESS Hybrid System EHS 4/11-R
- Remote control panel
- Removable doors
- Powerlock connector

⁽¹⁾ Cannot be retrofitted



Powerlock connector

THE NEW OPERATION UNIT



20-50 kVA



67-225 kVA

Switchboard

Displays	Digital
Operating mode	Auto / Manual
Display - Operation	
Start / Stop	Auto / Buttons
Monitoring the mains voltage	✓
Alternator voltage 3-	✓
Alternator voltage 1-	✓
Current strength 3-	✓
Current strength 1-	✓
Frequency indicator	✓
Operating hours counter	✓
Output	✓
Fuel indicator	✓
Engine temperature	✓
Oil pressure	✓
Engine speed	✓
Warning messages - Switching off	
Alternator over / undervoltage	A
Alternator over / underfrequency	A
Battery over / undervoltage	W
Engine temperature too high	A
Motor over / underspeed	A
Overload	A
Battery charging fault	W
Low fuel level	W / A
Low oil pressure	A
Start attempt failed	W
Leakage warning	A
Collective fault acoustic	W
Fuses	
3-pole line circuit breaker	upon request
4-pole line circuit breaker	✓
FI protection switch	✓
Insulation monitoring	upon request
EMERGENCY-STOP button	✓
More special equipment	
Connection to main terminal block	✓
E-RMA SIM	Option
E-RMA LAN	Option
External start possibility	Option
Socket combination	
CEE 400 V / 63 A	1
CEE 400 V / 32 A	1
CEE 400 V / 16 A	1
CEE 230 V / 16 A	1
230 V / 16 A shockproof	1

✓: Yes | **W**: Warning | **A**: Switching off

SPECIAL EQUIPMENT HYBRID SYSTEM

Technical Specifications	EHS 4/11-R
Continuous output @ 25°C	3,5 kVA
Peak output 30 min @ 25°C	4,0 kVA
Peak output 3s @ 25°C	10,5 kVA
Output voltage	230 V
Output current and output AC max. with an attached AC source	16 A
Protective function	Overload, over-temperature, short-circuit, battery
Socket	16 A shockproof
Battery system	Innovative technology, high discharge depth and charging possible at minus temperatures
Nominal capacity @ C20	10,5 kWh
Battery cycles with DoD 60% @ 25°C	2200
Protection Class	IP 54
Operating temperature range	-20°C to 55°C (>40°C derating)



Trailer available as an option

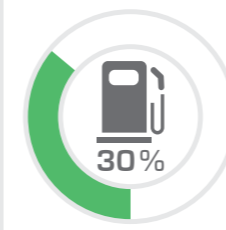
Try out the combination with the

LED Mobile floodlight tower EFA 900 S4

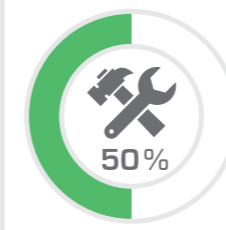


The new ENDRESS Rental series: **HYBRIDISED**

Fuel savings



Reduction in maintenance costs



Noise reduction



Longer service life



Lower exhaust gas emissions



powered by

PRETTL
energy



 **GERMANY**
since 1914



ENDRESS ®

Power Generators

ENDRESS Elektrogerätebau GmbH
Neckartenzlinger Strasse 39
D-72658 Bempflingen

Telefon: +49 (0)7123 - 9737-0
Telefax: +49 (0)7123 - 9737-50

info@endress-stromerzeuger.de
www.endress-stromerzeuger.de